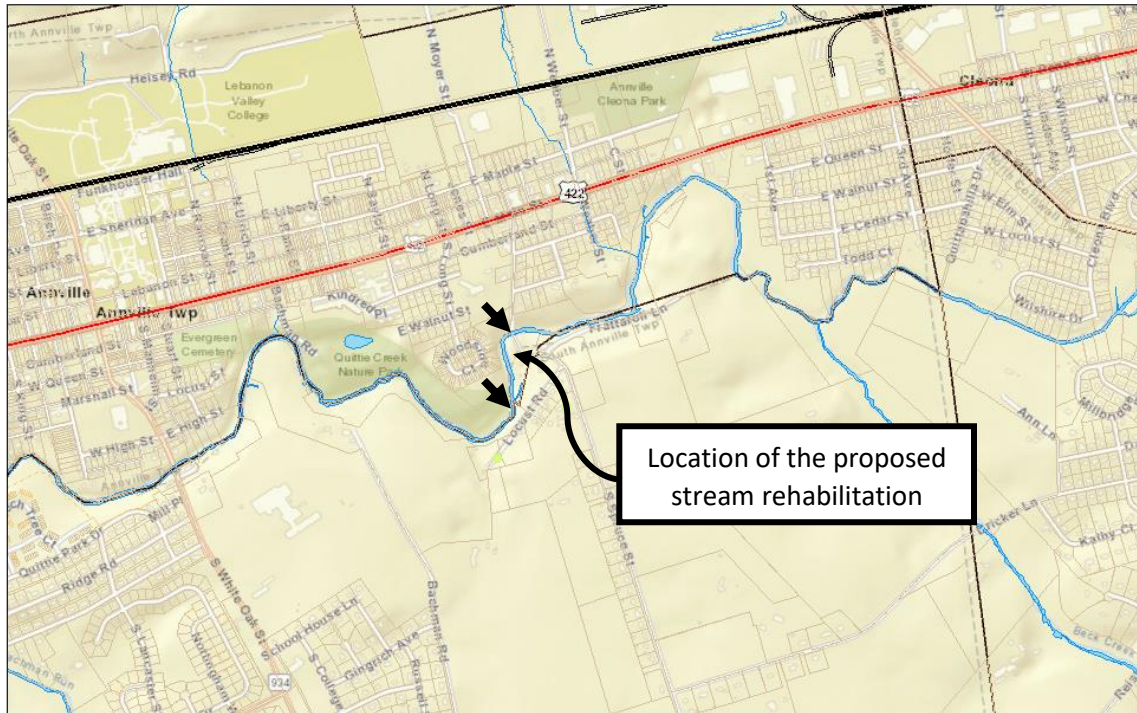


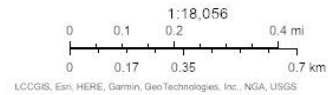
Attachment 1

Project Location



10/18/2022, 3:36:46 PM

- Manufactured Homes
- Property Lines
- Swamp or Marsh
- Subdivision Lots
- Lakes and Bodies of Water
- Municipal Boundaries
- Lakes and Bodies of Water



LCCGIS, Esri, HERE, Garmin, GeoTechnologies, Inc., NGA, USGS

Lebanon County

Disclaimer: Tax maps show the approximate boundaries of taxable and non-taxable property. The property boundaries depicted should not be interpreted as the legal boundary description. The legal boundary description can be obtained from the property's deed.

Concept Plan

